

# SAMSUNG

## Make Galaxy even more powerful for work with Samsung Knox Suite

### Built for business. Optimized for Samsung Galaxy.

In today's business landscape, where mobile devices are indispensable, efficiently securing and managing these devices is crucial.

Get the most from your Galaxy devices with Samsung Knox Suite by simplifying management, enhancing security, and delivering unparalleled, customized mobile work experience that let IT admins and employees focus on what matters most.

Samsung Knox Suite is an all-in-one solution designed to manage and secure work devices. Optimized for Samsung Galaxy, it streamlines every step of the mobile journey for IT admins – from setup to use and management.

### What makes Samsung Knox Suite unique?



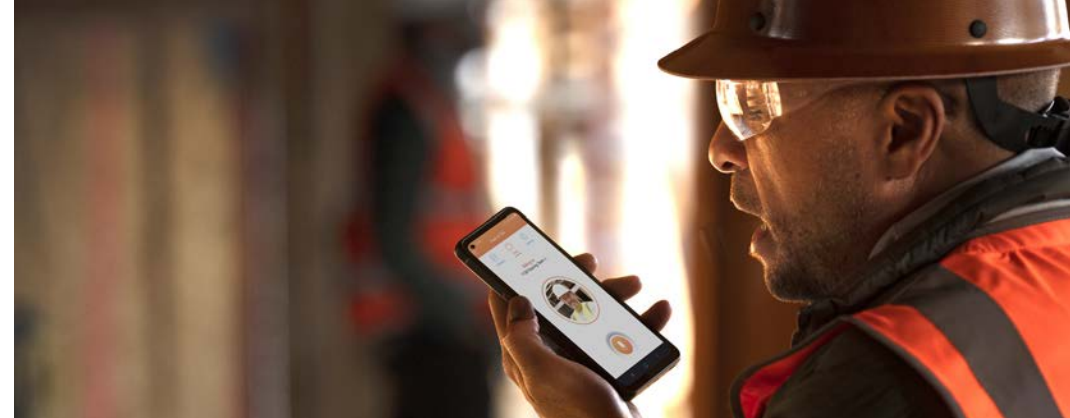
**Fully Optimized for the Samsung Galaxy Ecosystem.** Because we build our own devices, security platforms, and solutions too, Knox Suite unlocks advanced and granular features unique to us.



**Advanced device management and analytics on top of your UEM.** Knox Suite is designed to work on top of the UEM that you already use, providing advanced management and analytics features for Samsung Galaxy.



**Comprehensive solutions in a single bundle.** Knox Suite provides a wide array of integrated security and management tools for enterprise mobile devices in one convenient package.



# Knox Suite

## Streamline your IT journey with Samsung Knox Suite



### Secure

Take action fast with the help of Knox Suite. By leveraging the built-in security of the Samsung Knox Platform, Knox Suite provides a higher level of trustworthiness.



**Security Center:** Find vulnerabilities based on Android security patch levels, and map them across your entire device fleet.



**Security Patch:** Ensure all the devices in your fleet have the latest security patches without user interaction.



**Remote Device Health Attestation:** Detect unauthorized modifications to your devices, such as rooting, device ID tampering.



### Deploy

Make life easier by streamlining setups and deployment with Knox Suite, allowing employees to get to work with their devices right out of the box.



**Effortless Device Onboarding:** Simplify the setup wizard, automate UEM sign-ins, and quickly set up Wi-Fi configurations.



**Flexible Deployment:** Support both bulk and on-the-spot enrollment, ensuring smooth setup even in closed network environments.



**Secure Enrollment:** Enroll devices after integrity checks, with options to host the EMM/UEM agent on your internal network and automatically install necessary certificates before enrollment.



### Manage

Make enterprise device management effortless with Knox Suite, by ensuring your IT policies are consistent, from OS to apps.



**Managed OS Version:** Run the most reliable OS version, with flexible options to fine-tune updates for smooth, uninterrupted workflows.



**App Management:** Effortlessly distribute and manage apps across your fleet. Remotely control app settings, and perform seamless updates.



**Cross Platform Support:** Key UEM capabilities support major platforms including Android, iOS, Windows, Mac OS, Chrome OS, iPad OS and Wear OS.



### Analyze

Gain high visibility for seamless control with Knox Suite, including at-a glance device status checks and powerful data analytics.



**Device Usage Analysis:** Get deep insight into how your devices and apps are being used through an intuitive, customizable dashboard.



**Location Tracking:** Use GPS-based location tracking to help you tightly manage assets and optimize workflows.



**Issue Analysis:** Address potential issues before they disrupt operations, thanks to detailed insights into how your devices perform.



### Troubleshoot

Troubleshoot seamlessly and prevent slowdowns by tackling device issues head-on in real time with Knox Suite.

With extensive remote support tools at their fingertips, IT admins can jump in, fix issues, and keep business running. These tools are bundled right into Knox Suite, helping you lower your TCO.



**Knox Remote Support:** Remotely access employee devices for troubleshooting, regardless of their location<sup>1</sup>.



**Log Collection:** Collect detailed device logs for issue analysis, including debug and TCP dump logs. Quickly troubleshoot issues with a detailed summary of the device's information, all on a single page.



### Empower

Tailor Samsung Galaxy devices to meet specific work needs with Knox Suite. Empower both office and frontline employees with capabilities like barcode scanning and hardware key remapping, providing quick access to essential functions.



**Kiosk Mode:** Lock devices to a specific business app so employees can use them without distraction.



**Hardware Key Remapping:** Remap hardware keys on your devices to perform an app function, or to launch frequently-used features.



**Barcode Scanning:** Transform your frontline workers' mobile devices into powerful barcode scanners — boost both mobility and productivity.



**Sign-in Automation for Shared Device:** Frontline workers can pick up a shared device and make it their own, with simple sign-in automation using biometrics.

# Knox Suite Plans

Choose from a range of plans tailored to fit your needs

	Included with B2B Galaxy smartphones and tablets	Knox Suite upgrade plans		
	Knox Suite - Base Plan	Knox Suite - Essentials Plan	Knox Suite - Companion Plan	Knox Suite - Enterprise Plan
	For businesses seeking a simple and secure setup	For SMBs seeking device management and real-time troubleshooting support	For organizations that need all the features of the Enterprise Plan, but already have a preferred UEM	For large enterprises with extensive device fleets that require advanced features for optimized Samsung Galaxy usage
<b>Knox Platform for Enterprise</b> Government-grade security management features built for business	✓	✓	✓	✓
<b>Knox Mobile Enrollment</b> A service that offers out-of-the-box enrollment, enabling seamless setup of corporate devices	✓	✓	✓	✓
<b>Knox Manage</b> Powerful, yet flexible cross-platform UEM solution optimized for Samsung		✓		✓
<b>Knox Remote Support</b> Real-time access and troubleshooting tool that allow IT admins to diagnose and resolve issues on corporate devices		✓	✓	✓
<b>Knox E-FOTA</b> Remote firmware management tool that gives IT admins full control over OS updates on corporate			✓	✓
<b>Knox Asset Intelligence</b> Comprehensive analytics tool that provides IT admins with insight into device usage, security, and issues			✓	✓
<b>Knox Capture</b> Data capture solution that turns Samsung devices into powerful barcode scanning tools			✓	✓
<b>Knox Authentication Manager</b> Sign-in automation solution for shared devices, streamlining device and app logins			✓	✓



Contact your Connection Account Team for more information.

Business Solutions 1.800.800.0014    Enterprise Solutions 1.800.369.1047    Public Sector Solutions 1.800.800.0019

[www.connection.com/Samsung](http://www.connection.com/Samsung)

**SAMSUNG**